



**CULLET CONVEYOR TAIL ASSEMBLY**

**12" BELT WIDTH**

**AVAILABLE IN**

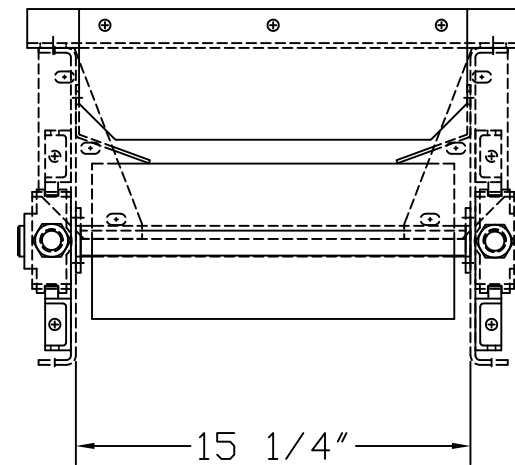
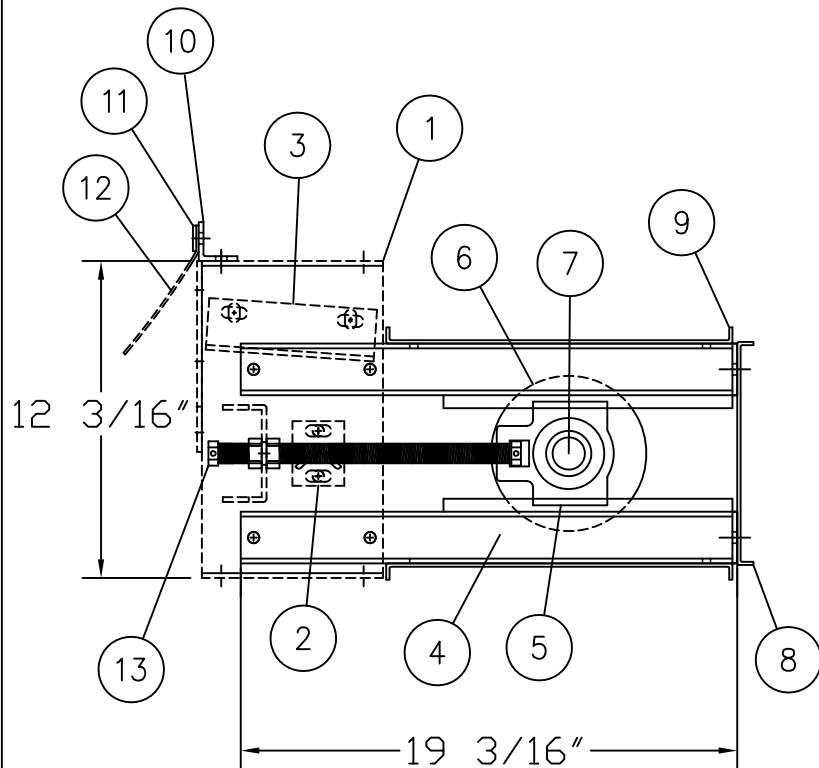
**6", 12", AND 18" TAKE UP**

**WITH**

**BARE OR WING TAIL PULLEY**

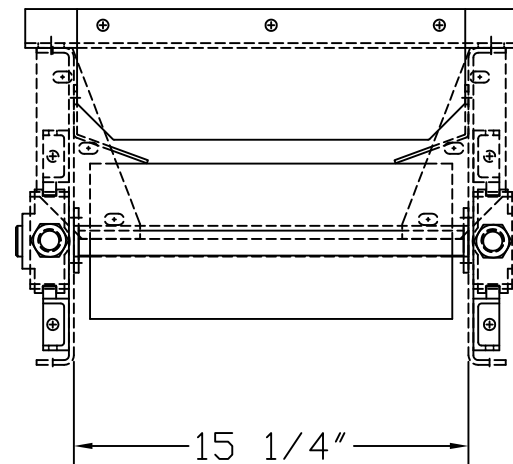
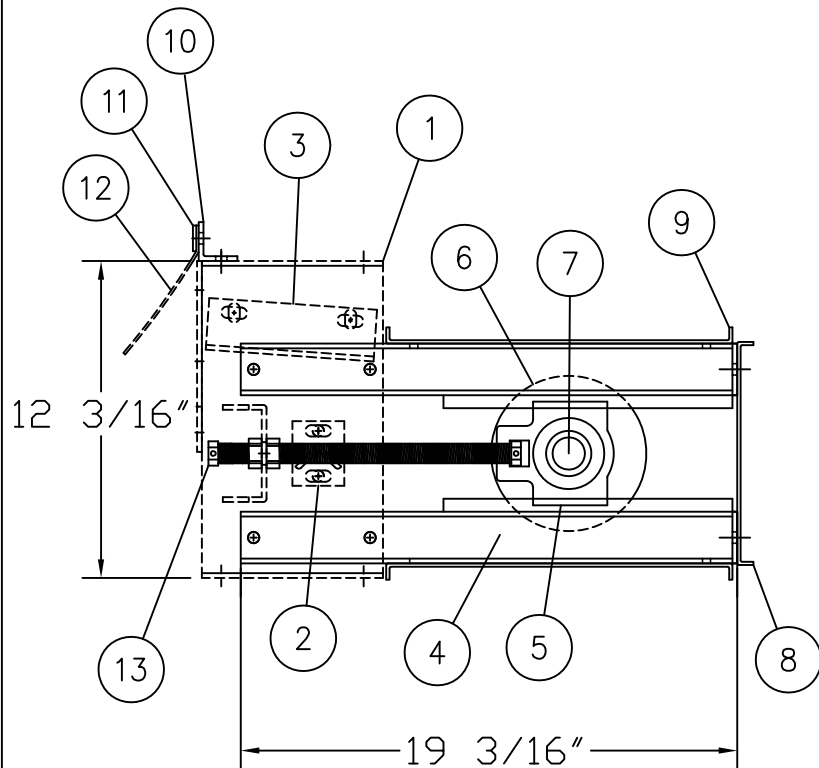
PART NO: 00B30020  
 CULLET CONVEYOR TAIL ASSEMBLY  
 6" DIAMETER CROWNED WINGED PULLEY  
 12" BELT WIDTH  
 6" TAKE-UP

ITEM	PART NO.	DESCRIPTION	QTY.
1	01B30040	TERMINAL PLATE	2
2	01B30059	ANGLE CROSS TIE WELDMENT	1
3	02B30325	TRANSITION GUIDE TAIL TERMINAL	2
4	01B30200	TAKE-UP CHANNEL WELDMENT	4
5	05A99075	TAKE-UP BEARING	2
6	05B30303	CROWNED WINGED PULLEY	1
7	02A30950	TAIL SHAFT	1
8	02B30703	TAKE UP END PLATE	1
9	02B30733	TAKE UP PULLEY GUARD	2
10	02B30403	FLAPPER MOUNTING ANGLE	1
11	02B30433	FLAPPER HOLD DOWN BAR	1
12	02B30463	BACK FLAPPER BELTING	1
13	02B30230	TAIL TAKE-UP ROD ASS'Y	2



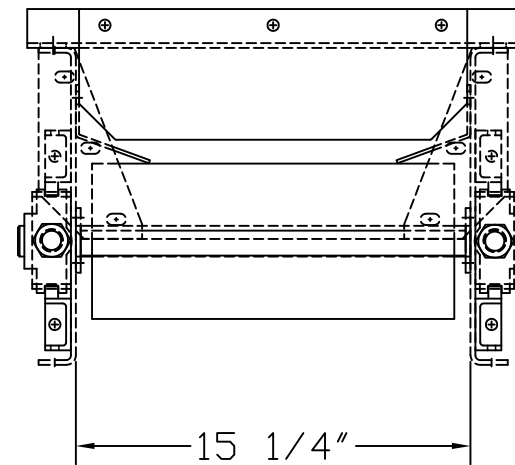
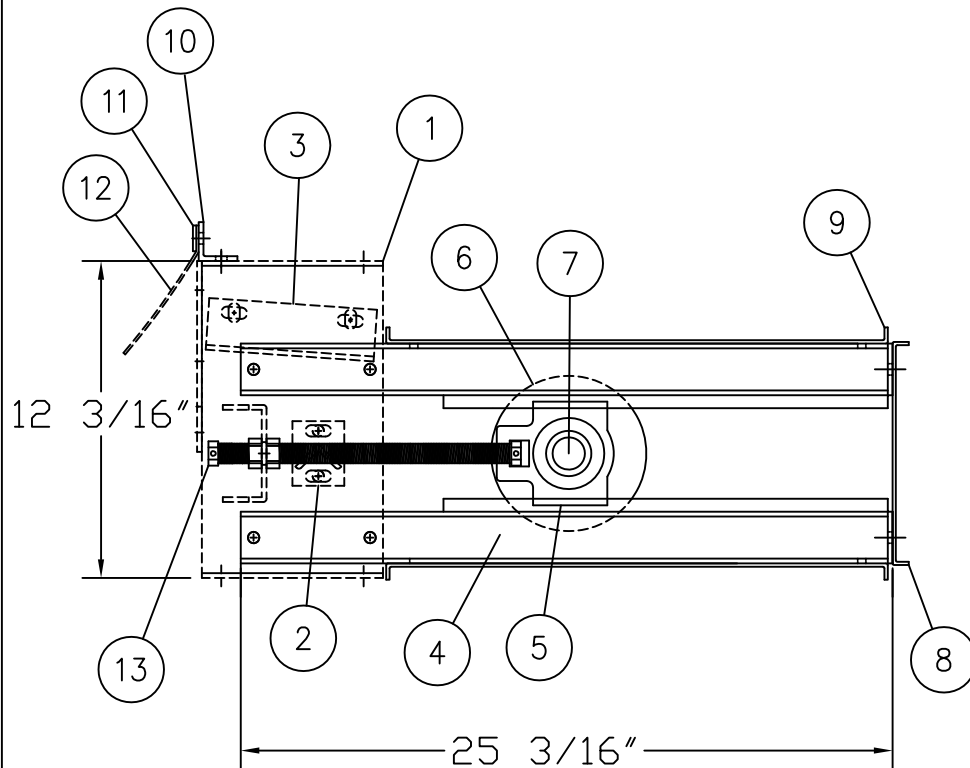
PART NO: 00B30021  
 CULLET CONVEYOR TAIL ASSEMBLY  
 6" DIAMETER CROWNED BARE PULLEY  
 12" BELT WIDTH  
 6" TAKE-UP

ITEM	PART NO.	DESCRIPTION	QTY.
1	01B30040	TERMINAL PLATE	2
2	01B30059	ANGLE CROSS TIE WELDMENT	1
3	02B30325	TRANSITION GUIDE TAIL TERMINAL	2
4	01B30200	TAKE-UP CHANNEL WELDMENT	4
5	05A99075	TAKE-UP BEARING	2
6	05B30403	CROWNED BARE PULLEY	1
7	02A30950	TAIL SHAFT	1
8	02B30703	TAKE UP END PLATE	1
9	02B30733	TAKE UP PULLEY GUARD	2
10	02B30403	FLAPPER MOUNTING ANGLE	1
11	02B30433	FLAPPER HOLD DOWN BAR	1
12	02B30463	BACK FLAPPER BELTING	1
13	02B30230	TAIL TAKE-UP ROD ASS'Y	2



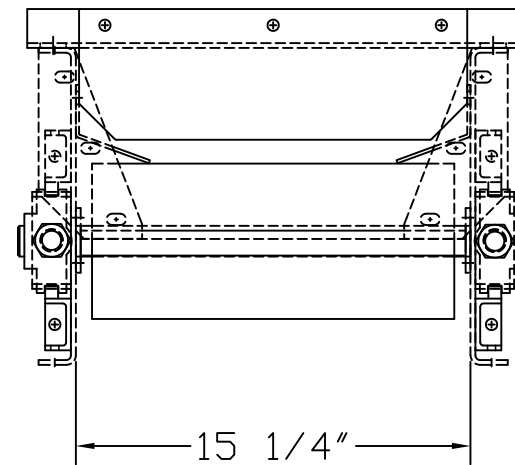
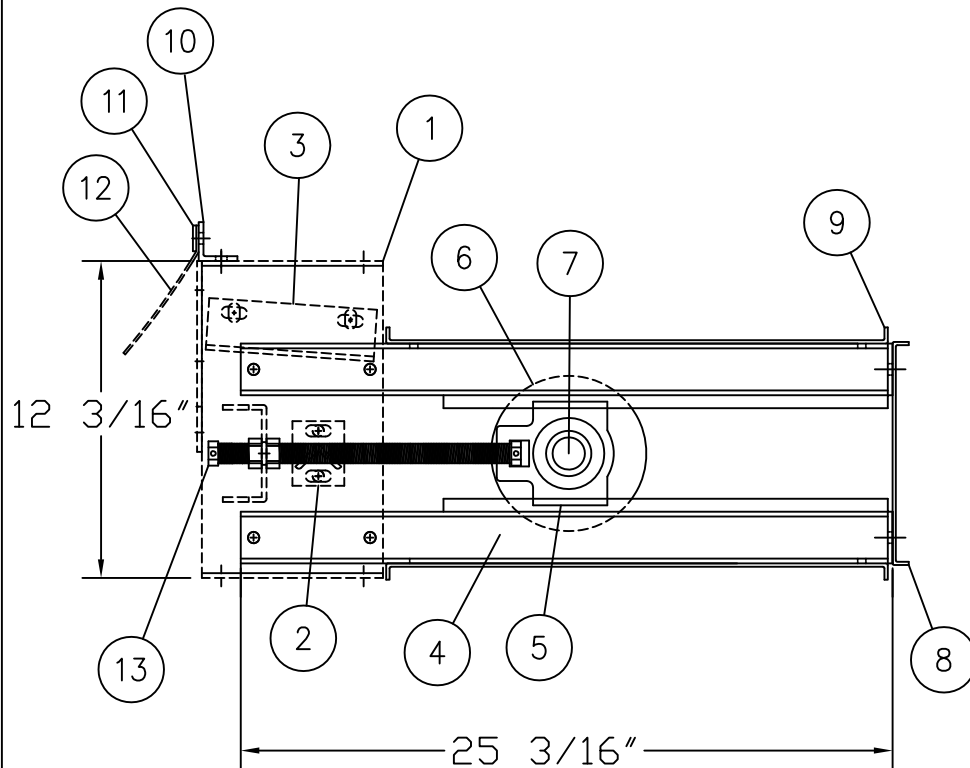
PART NO: 00B30030  
 CULLET CONVEYOR TAIL ASSEMBLY  
 6" DIAMETER CROWNED WINGED PULLEY  
 12" BELT WIDTH  
 12" TAKE-UP

ITEM	PART NO.	DESCRIPTION	QTY.
1	01B30040	TERMINAL PLATE	2
2	01B30059	ANGLE CROSS TIE WELDMENT	1
3	02B30325	TRANSITION GUIDE TAIL TERMINAL	2
4	01B30202	TAKE-UP CHANNEL WELDMENT	4
5	05A99075	TAKE-UP BEARING	2
6	05B30303	CROWNED WINGED PULLEY	1
7	02A30950	TAIL SHAFT	1
8	02B30703	TAKE UP END PLATE	1
9	02B30763	TAKE UP PULLEY GUARD	2
10	02B30403	FLAPPER MOUNTING ANGLE	1
11	02B30433	FLAPPER HOLD DOWN BAR	1
12	02B30463	BACK FLAPPER BELTING	1
13	02B30231	TAIL TAKE-UP ROD ASS'Y	2



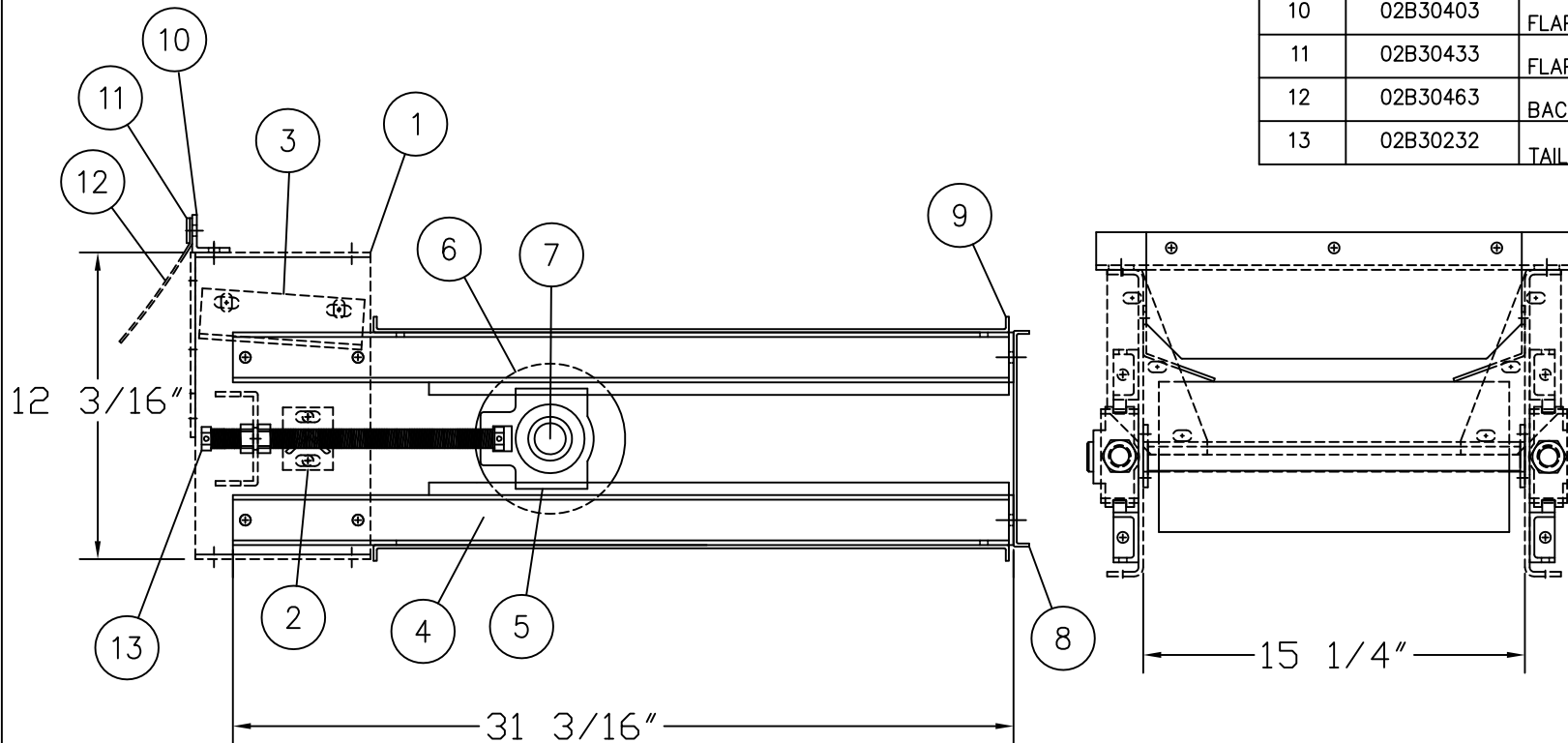
PART NO: 00B30031  
 CULLET CONVEYOR TAIL ASSEMBLY  
 6" DIAMETER CROWNED BARE PULLEY  
 12" BELT WIDTH  
 12" TAKE-UP

ITEM	PART NO.	DESCRIPTION	QTY.
1	01B30040	TERMINAL PLATE	2
2	01B30059	ANGLE CROSS TIE WELDMENT	1
3	02B30325	TRANSITION GUIDE TAIL TERMINAL	2
4	01B30202	TAKE-UP CHANNEL WELDMENT	4
5	05A99075	TAKE-UP BEARING	2
6	05B30403	CROWNED BARE PULLEY	1
7	02A30950	TAIL SHAFT	1
8	02B30703	TAKE UP END PLATE	1
9	02B30763	TAKE UP PULLEY GUARD	2
10	02B30403	FLAPPER MOUNTING ANGLE	1
11	02B30433	FLAPPER HOLD DOWN BAR	1
12	02B30463	BACK FLAPPER BELTING	1
13	02B30231	TAIL TAKE-UP ROD ASS'Y	2



PART NO: 00B30040  
 CULLET CONVEYOR TAIL ASSEMBLY  
 6" DIAMETER CROWNED WINGED PULLEY  
 12" BELT WIDTH  
 18" TAKE-UP

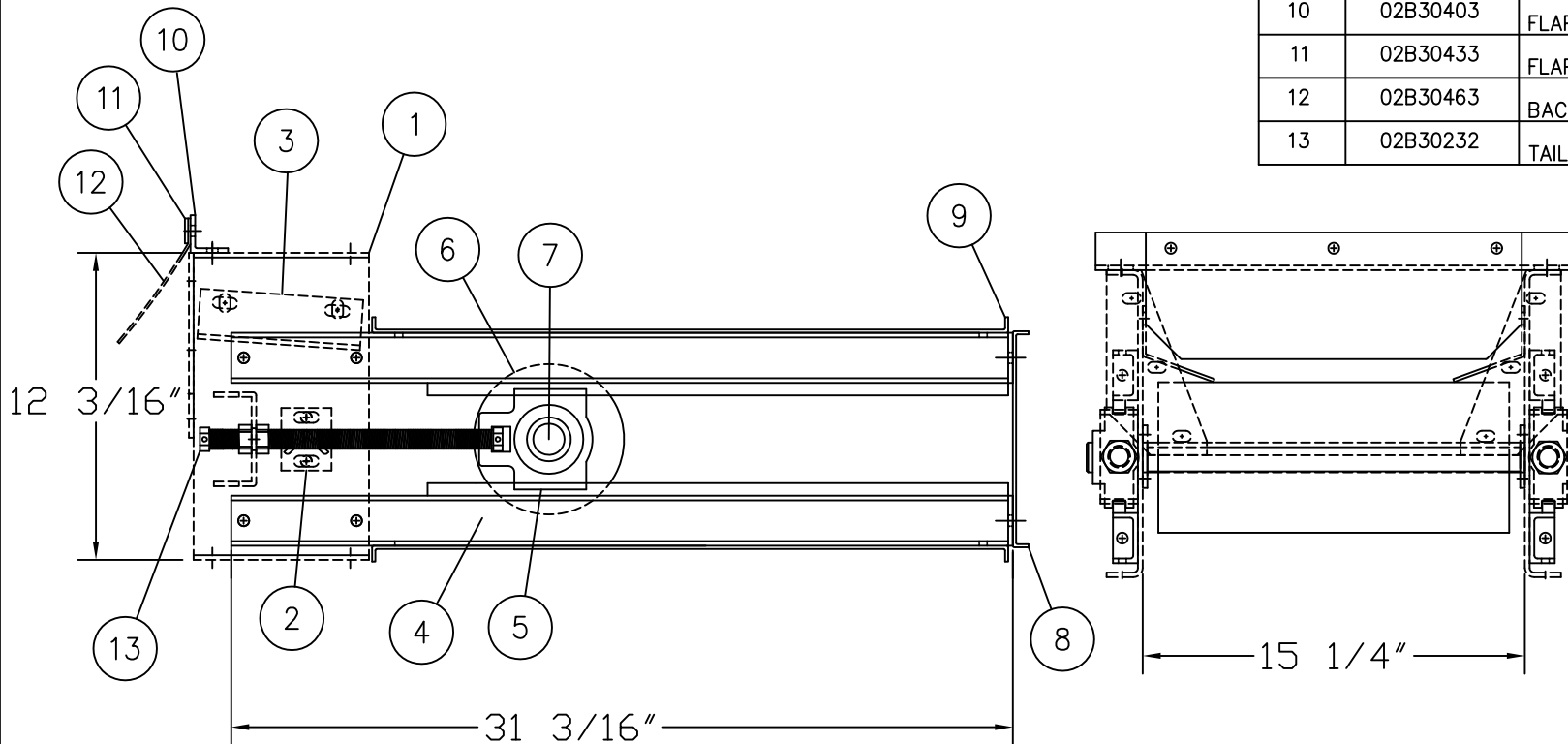
ITEM	PART NO.	DESCRIPTION	QTY.
1	01B30040	TERMINAL PLATE	2
2	01B30059	ANGLE CROSS TIE WELDMENT	1
3	02B30325	TRANSITION GUIDE TAIL TERMINAL	2
4	01B30204	TAKE-UP CHANNEL WELDMENT	4
5	05A99075	TAKE-UP BEARING	2
6	05B30303	CROWNED WINGED PULLEY	1
7	02A30950	TAIL SHAFT	1
8	02B30703	TAKE UP END PLATE	1
9	02B30793	TAKE UP PULLEY GUARD	2
10	02B30403	FLAPPER MOUNTING ANGLE	1
11	02B30433	FLAPPER HOLD DOWN BAR	1
12	02B30463	BACK FLAPPER BELTING	1
13	02B30232	TAIL TAKE-UP ROD ASS'Y	2



7620 EVERGREEN ST.  
 LIMA, NY 14485  
 (v) 585.624.7850 (f) 585.624.8015  
 1.888.NECONVEY (1.888.632.6683)  
 (e) conveyor@neind.com

PART NO: 00B30041  
 CULLET CONVEYOR TAIL ASSEMBLY  
 6" DIAMETER CROWNED BARE PULLEY  
 12" BELT WIDTH  
 18" TAKE-UP

ITEM	PART NO.	DESCRIPTION	QTY.
1	01B30040	TERMINAL PLATE	2
2	01B30059	ANGLE CROSS TIE WELDMENT	1
3	02B30325	TRANSITION GUIDE TAIL TERMINAL	2
4	01B30204	TAKE-UP CHANNEL WELDMENT	4
5	05A99075	TAKE-UP BEARING	2
6	05B30403	CROWNED BARE PULLEY	1
7	02A30950	TAIL SHAFT	1
8	02B30703	TAKE UP END PLATE	1
9	02B30793	TAKE UP PULLEY GUARD	2
10	02B30403	FLAPPER MOUNTING ANGLE	1
11	02B30433	FLAPPER HOLD DOWN BAR	1
12	02B30463	BACK FLAPPER BELTING	1
13	02B30232	TAIL TAKE-UP ROD ASS'Y	2





**CULLET CONVEYOR TAIL ASSEMBLY**

**18" BELT WIDTH**

**AVAILABLE IN**

**6", 12", AND 18" TAKE UP**

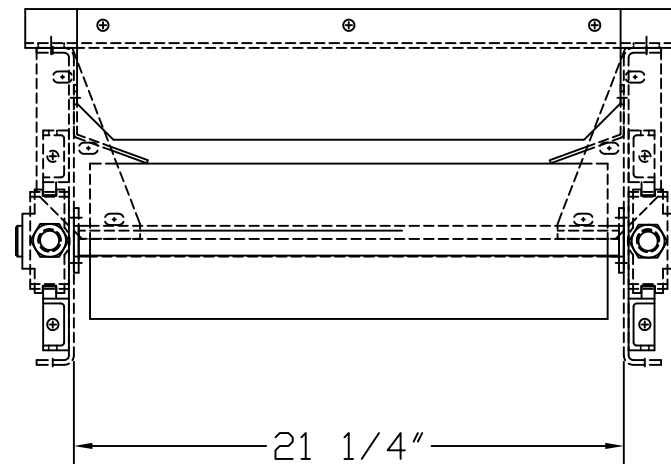
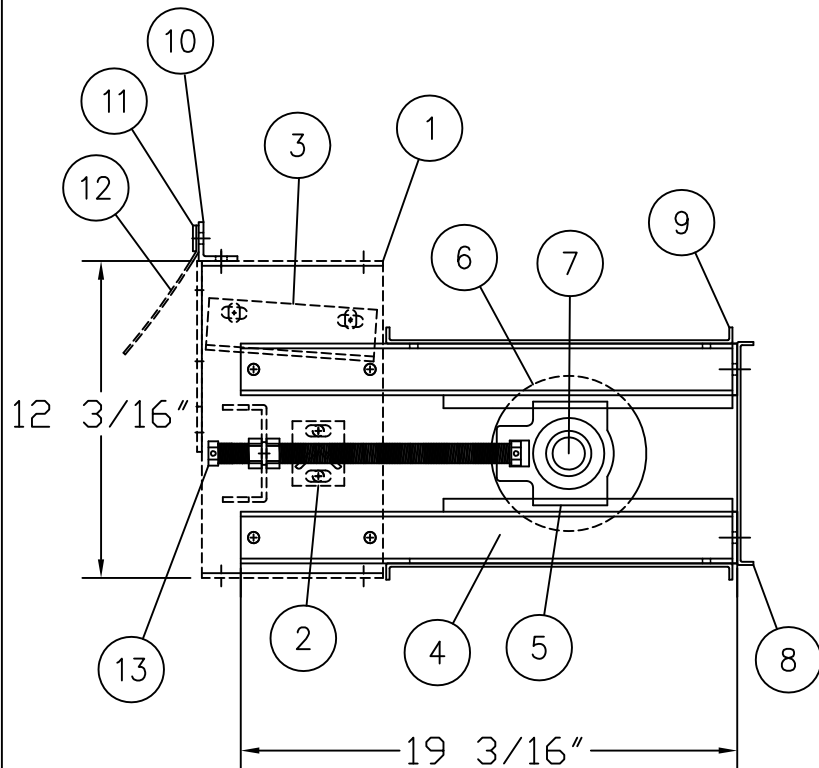
**WITH**

**BARE OR WING TAIL PULLEY**



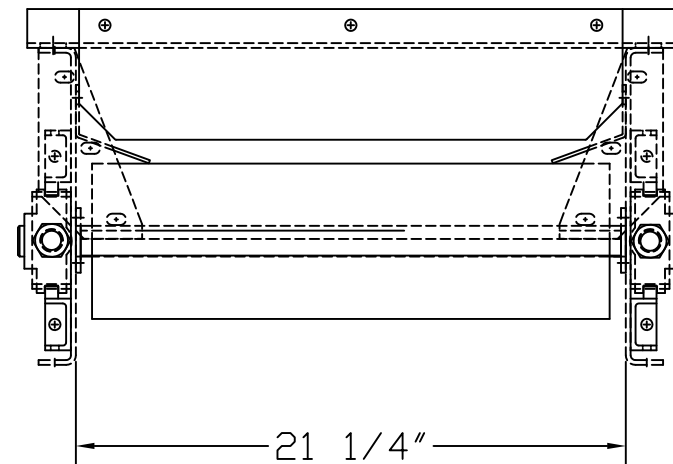
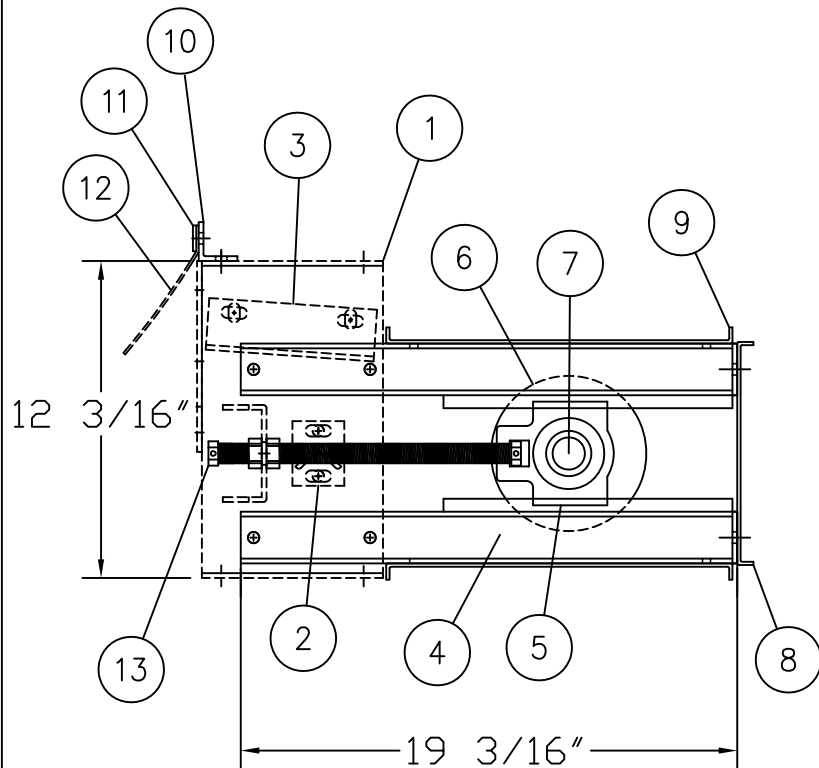
PART NO: 00B30120  
 CULLET CONVEYOR TAIL ASSEMBLY  
 6" DIAMETER CROWNED WINGED PULLEY  
 18" BELT WIDTH  
 6" TAKE-UP

ITEM	PART NO.	DESCRIPTION	QTY.
1	01B30040	TERMINAL PLATE	2
2	01B30065	ANGLE CROSS TIE WELDMENT	1
3	02B30325	TRANSITION GUIDE TAIL TERMINAL	2
4	01B30200	TAKE-UP CHANNEL WELDMENT	4
5	05A99075	TAKE-UP BEARING	2
6	05B30309	CROWNED WINGED PULLEY	1
7	02A30955	TAIL SHAFT	1
8	02B30709	TAKE UP END PLATE	1
9	02B30739	TAKE UP PULLEY GUARD	2
10	02B30409	FLAPPER MOUNTING ANGLE	1
11	02B30439	FLAPPER HOLD DOWN BAR	1
12	02B30469	BACK FLAPPER BELTING	1
13	02B30230	TAIL TAKE-UP ROD ASS'Y	2



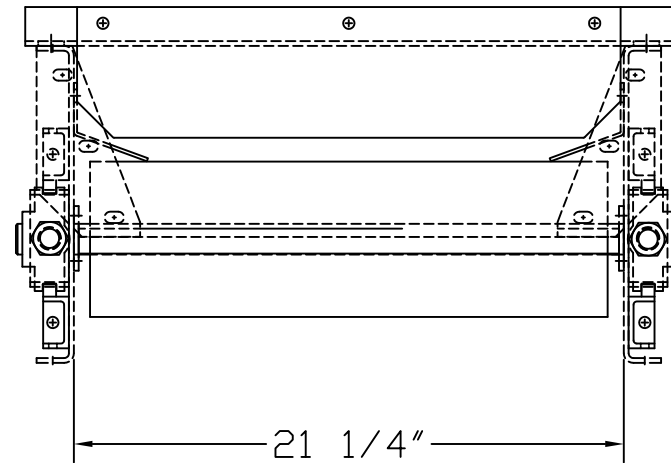
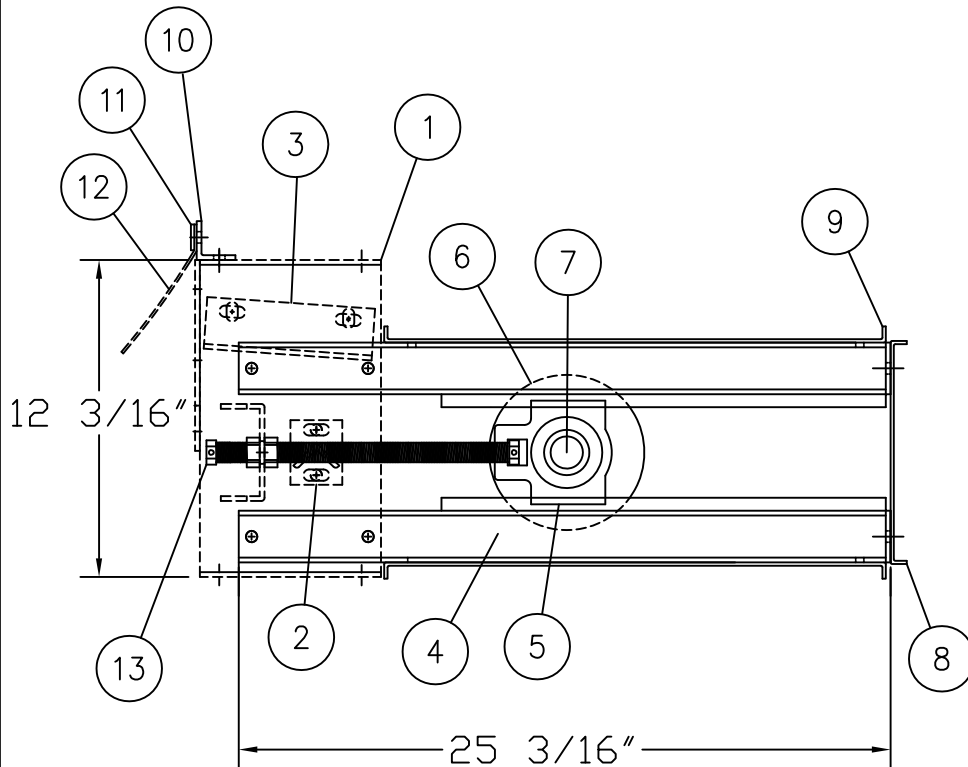
PART NO: 00B30121  
 CULLET CONVEYOR TAIL ASSEMBLY  
 6" DIAMETER CROWNED BARE PULLEY  
 18" BELT WIDTH  
 6" TAKE-UP

ITEM	PART NO.	DESCRIPTION	QTY.
1	01B30040	TERMINAL PLATE	2
2	01B30065	ANGLE CROSS TIE WELDMENT	1
3	02B30325	TRANSITION GUIDE TAIL TERMINAL	2
4	01B30200	TAKE-UP CHANNEL WELDMENT	4
5	05A99075	TAKE-UP BEARING	2
6	05B30403	CROWNED BARE PULLEY	1
7	02A30955	TAIL SHAFT	1
8	02B30709	TAKE UP END PLATE	1
9	02B30739	TAKE UP PULLEY GUARD	2
10	02B30409	FLAPPER MOUNTING ANGLE	1
11	02B30439	FLAPPER HOLD DOWN BAR	1
12	02B30469	BACK FLAPPER BELTING	1
13	02B30230	TAIL TAKE-UP ROD ASS'Y	2



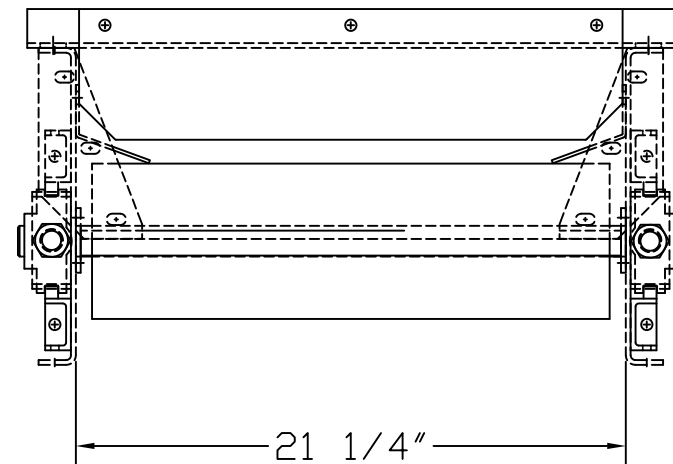
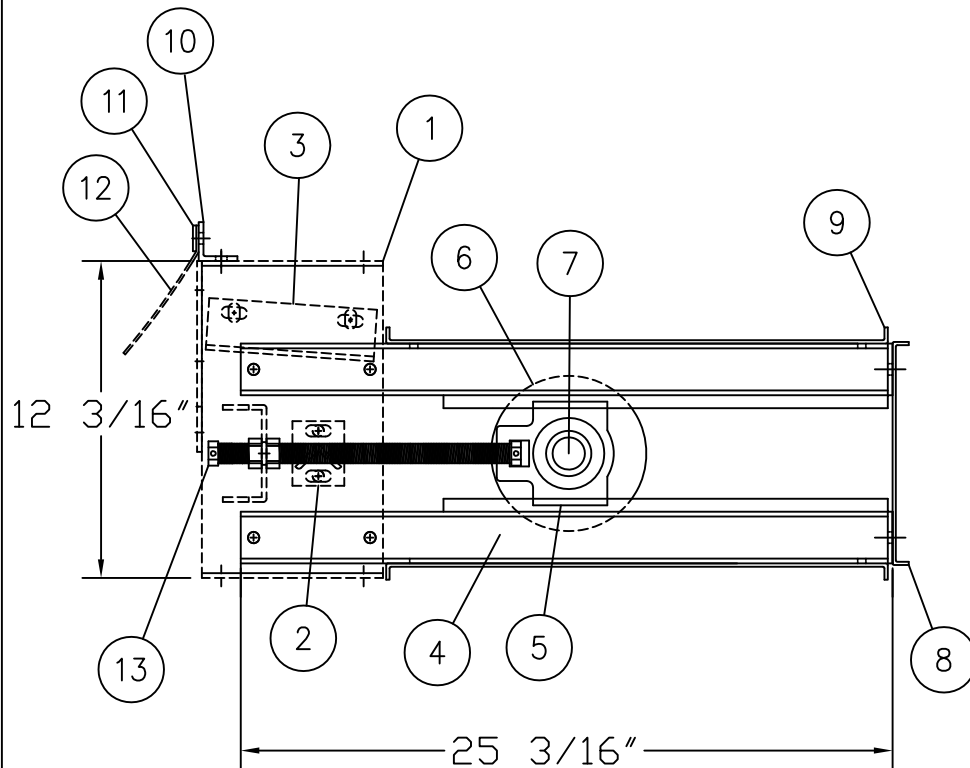
PART NO: 00B30130  
 CULLET CONVEYOR TAIL ASSEMBLY  
 6" DIAMETER CROWNED WINGED PULLEY  
 18" BELT WIDTH  
 12" TAKE-UP

ITEM	PART NO.	DESCRIPTION	QTY.
1	01B30040	TERMINAL PLATE	2
2	01B30065	ANGLE CROSS TIE WELDMENT	1
3	02B30325	TRANSITION GUIDE TAIL TERMINAL	2
4	01B30202	TAKE-UP CHANNEL WELDMENT	4
5	05A99075	TAKE-UP BEARING	2
6	05B30309	CROWNED WINGED PULLEY	1
7	02A30955	TAIL SHAFT	1
8	02B30709	TAKE UP END PLATE	1
9	02B30769	TAKE UP PULLEY GUARD	2
10	02B30409	FLAPPER MOUNTING ANGLE	1
11	02B30439	FLAPPER HOLD DOWN BAR	1
12	02B30469	BACK FLAPPER BELTING	1
13	02B30231	TAIL TAKE-UP ROD ASS'Y	2



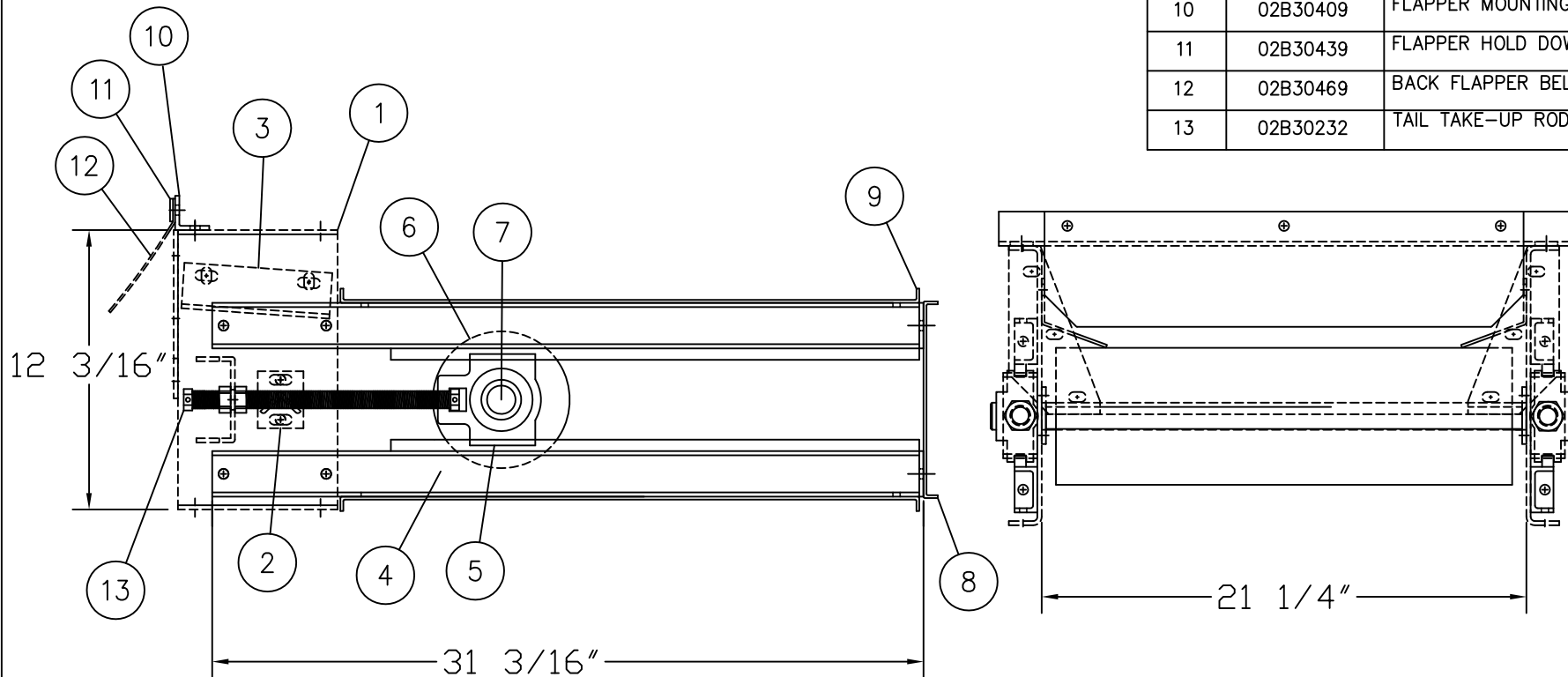
PART NO: 00B30131  
 CULLET CONVEYOR TAIL ASSEMBLY  
 6" DIAMETER CROWNED BARE PULLEY  
 18" BELT WIDTH  
 12" TAKE-UP

ITEM	PART NO.	DESCRIPTION	QTY.
1	01B30040	TERMINAL PLATE	2
2	01B30065	ANGLE CROSS TIE WELDMENT	1
3	02B30325	TRANSITION GUIDE TAIL TERMINAL	2
4	01B30202	TAKE-UP CHANNEL WELDMENT	4
5	05A99075	TAKE-UP BEARING	2
6	05B30403	CROWNED BARE PULLEY	1
7	02A30955	TAIL SHAFT	1
8	02B30709	TAKE UP END PLATE	1
9	02B30769	TAKE UP PULLEY GUARD	2
10	02B30409	FLAPPER MOUNTING ANGLE	1
11	02B30439	FLAPPER HOLD DOWN BAR	1
12	02B30469	BACK FLAPPER BELTING	1
13	02B30231	TAIL TAKE-UP ROD ASS'Y	2



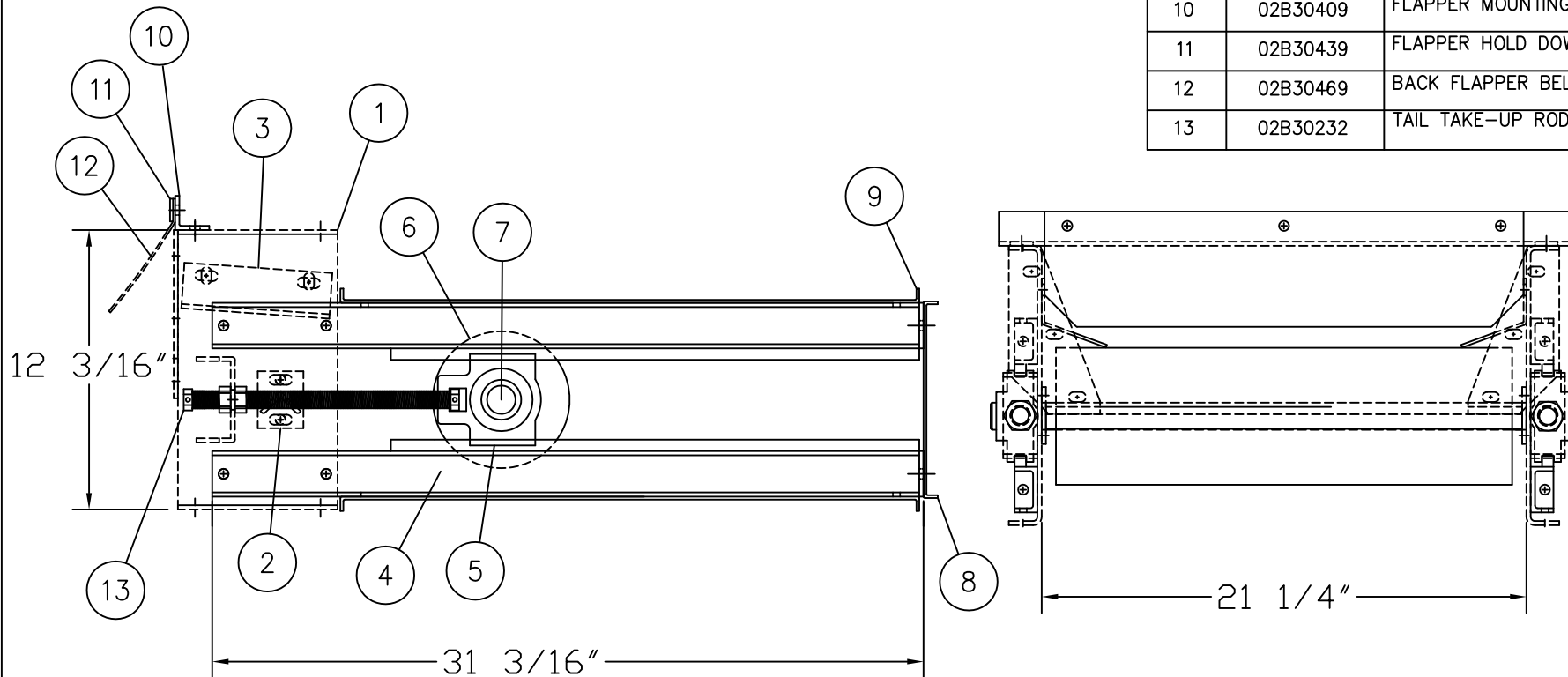
PART NO: 00B30140  
 CULLET CONVEYOR TAIL ASSEMBLY  
 6" DIAMETER CROWNED WINGED PULLEY  
 18" BELT WIDTH  
 18" TAKE-UP

ITEM	PART NO.	DESCRIPTION	QTY.
1	01B30040	TERMINAL PLATE	2
2	01B30065	ANGLE CROSS TIE WELDMENT	1
3	02B30325	TRANSITION GUIDE TAIL TERMINAL	2
4	01B30204	TAKE-UP CHANNEL WELDMENT	4
5	05A99075	TAKE-UP BEARING	2
6	05B30309	CROWNED WINGED PULLEY	1
7	02A30955	TAIL SHAFT	1
8	02B30709	TAKE UP END PLATE	1
9	02B30799	TAKE UP PULLEY GUARD	2
10	02B30409	FLAPPER MOUNTING ANGLE	1
11	02B30439	FLAPPER HOLD DOWN BAR	1
12	02B30469	BACK FLAPPER BELTING	1
13	02B30232	TAIL TAKE-UP ROD ASS'Y	2



PART NO: 00B30141  
 CULLET CONVEYOR TAIL ASSEMBLY  
 6" DIAMETER CROWNED BARE PULLEY  
 18" BELT WIDTH  
 18" TAKE-UP

ITEM	PART NO.	DESCRIPTION	QTY.
1	01B30040	TERMINAL PLATE	2
2	01B30065	ANGLE CROSS TIE WELDMENT	1
3	02B30325	TRANSITION GUIDE TAIL TERMINAL	2
4	01B30204	TAKE-UP CHANNEL WELDMENT	4
5	05A99075	TAKE-UP BEARING	2
6	05B30403	CROWNED BARE PULLEY	1
7	02A30955	TAIL SHAFT	1
8	02B30709	TAKE UP END PLATE	1
9	02B30799	TAKE UP PULLEY GUARD	2
10	02B30409	FLAPPER MOUNTING ANGLE	1
11	02B30439	FLAPPER HOLD DOWN BAR	1
12	02B30469	BACK FLAPPER BELTING	1
13	02B30232	TAIL TAKE-UP ROD ASS'Y	2





**CULLET CONVEYOR TAIL ASSEMBLY**

**24" BELT WIDTH**

**AVAILABLE IN**

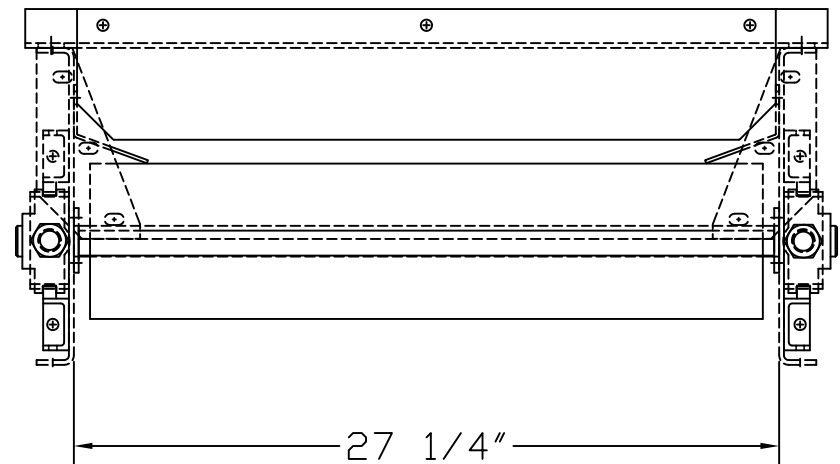
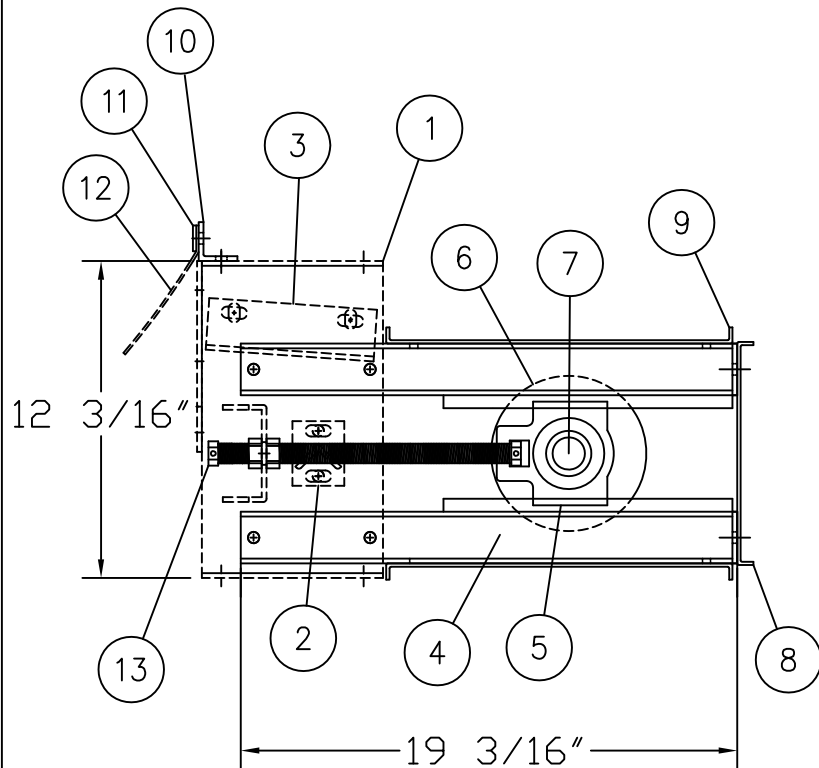
**6", 12", AND 18" TAKE UP**

**WITH**

**BARE OR WING TAIL PULLEY**

PART NO: 00B30220  
 CULLET CONVEYOR TAIL ASSEMBLY  
 6" DIAMETER CROWNED WINGED PULLEY  
 24" BELT WIDTH  
 6" TAKE-UP

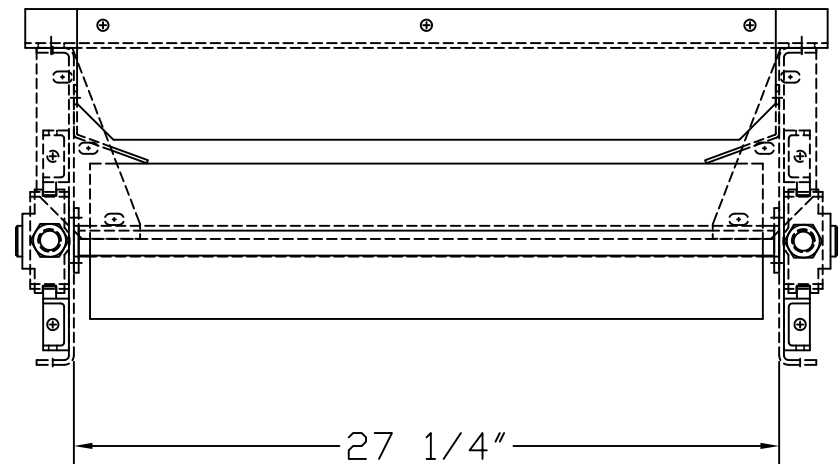
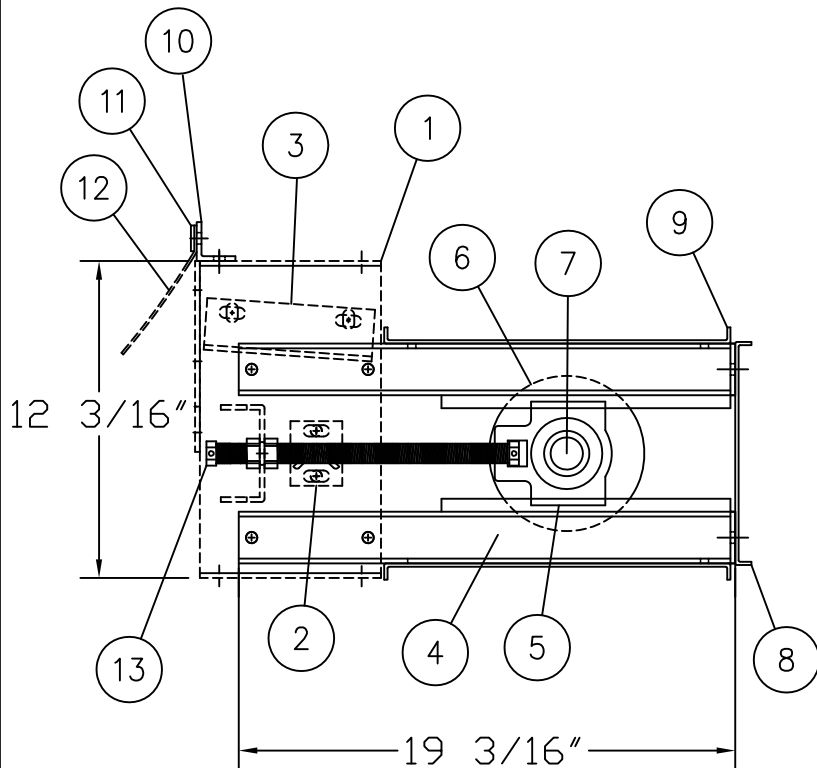
ITEM	PART NO.	DESCRIPTION	QTY.
1	01B30040	TERMINAL PLATE	2
2	01B30071	ANGLE CROSS TIE WELDMENT	1
3	02B30325	TRANSITION GUIDE TAIL TERMINAL	2
4	01B30200	TAKE-UP CHANNEL WELDMENT	4
5	05A99075	TAKE-UP BEARING	2
6	05B30315	CROWNED WINGED PULLEY	1
7	02A30960	TAIL SHAFT	1
8	02B30715	TAKE UP END PLATE	1
9	02B30745	TAKE UP PULLEY GUARD	2
10	02B30415	FLAPPER MOUNTING ANGLE	1
11	02B30445	FLAPPER HOLD DOWN BAR	1
12	02B30475	BACK FLAPPER BELTING	1
13	02B30230	TAIL TAKE-UP ROD ASS'Y	2





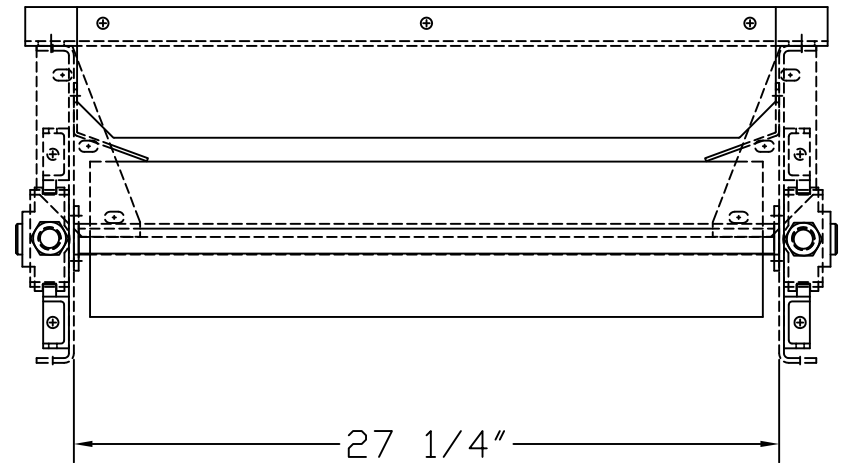
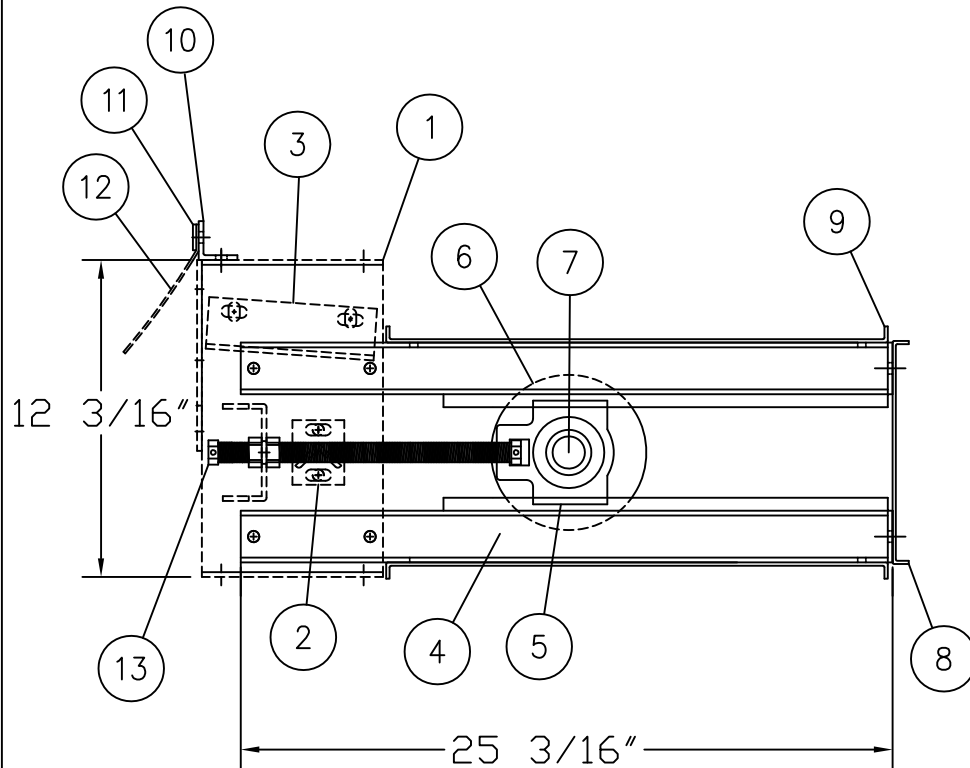
PART NO: 00B30221  
 CULLET CONVEYOR TAIL ASSEMBLY  
 6" DIAMETER CROWNED BARE PULLEY  
 24" BELT WIDTH  
 6" TAKE-UP

ITEM	PART NO.	DESCRIPTION	QTY.
1	01B30040	TERMINAL PLATE	2
2	01B30071	ANGLE CROSS TIE WELDMENT	1
3	02B30325	TRANSITION GUIDE TAIL TERMINAL	2
4	01B30200	TAKE-UP CHANNEL WELDMENT	4
5	05A99075	TAKE-UP BEARING	2
6	05B30415	CROWNED BARE PULLEY	1
7	02A30960	TAIL SHAFT	1
8	02B30715	TAKE UP END PLATE	1
9	02B30745	TAKE UP PULLEY GUARD	2
10	02B30415	FLAPPER MOUNTING ANGLE	1
11	02B30445	FLAPPER HOLD DOWN BAR	1
12	02B30475	BACK FLAPPER BELTING	1
13	02B30230	TAIL TAKE-UP ROD ASS'Y	2



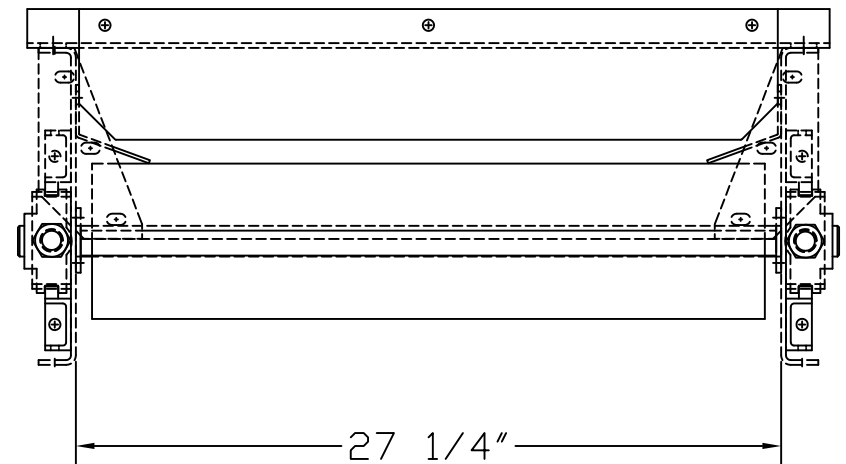
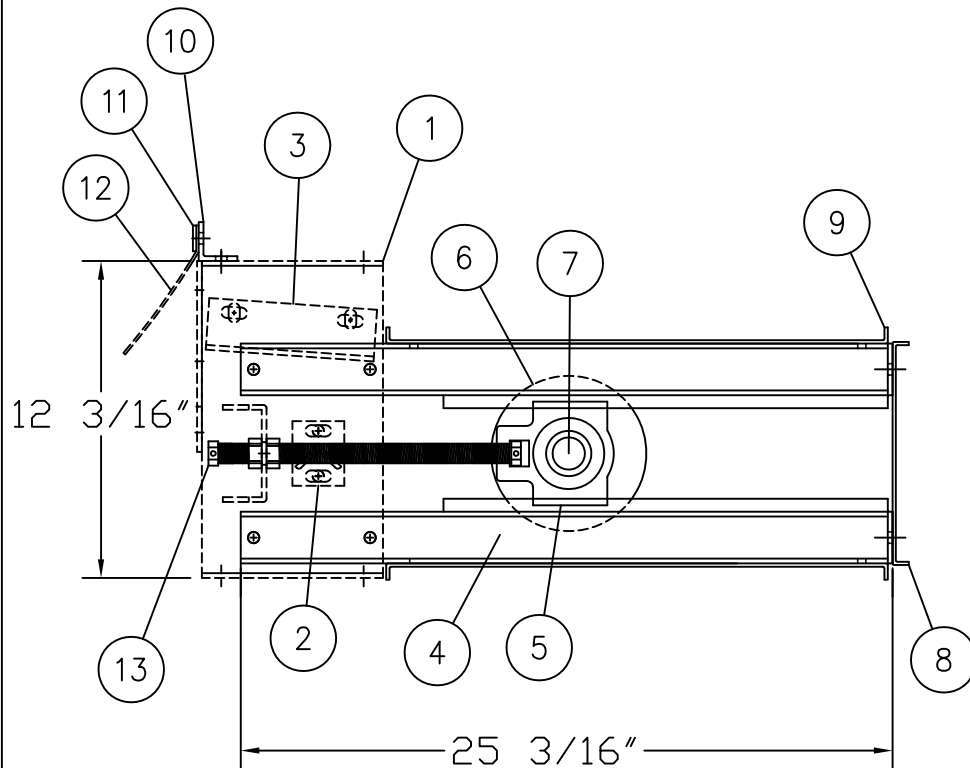
PART NO: 00B30230  
 CULLET CONVEYOR TAIL ASSEMBLY  
 6" DIAMETER CROWNED WINGED PULLEY  
 24" BELT WIDTH  
 12" TAKE-UP

ITEM	PART NO.	DESCRIPTION	QTY.
1	01B30040	TERMINAL PLATE	2
2	01B30071	ANGLE CROSS TIE WELDMENT	1
3	02B30325	TRANSITION GUIDE TAIL TERMINAL WELDMENT	2
4	01B30202	12" TAKE-UP CHANNEL	4
5	05A99075	TAKE-UP BEARING	2
6	05B30315	CROWNED WINGED PULLEY	1
7	02A30960	TAIL SHAFT	1
8	02B30715	TAKE UP END PLATE	1
9	02B30775	24" B.W. X 12" TAKE-UP TAKE UP PULLEY GUARD	2
10	02B30415	FLAPPER MOUNTING ANGLE	1
11	02B30445	FLAPPER HOLD DOWN BAR	1
12	02B30475	BACK FLAPPER BELTING	1
13	02B30231	ASSEMBLY TAIL TAKE-UP ROD	2



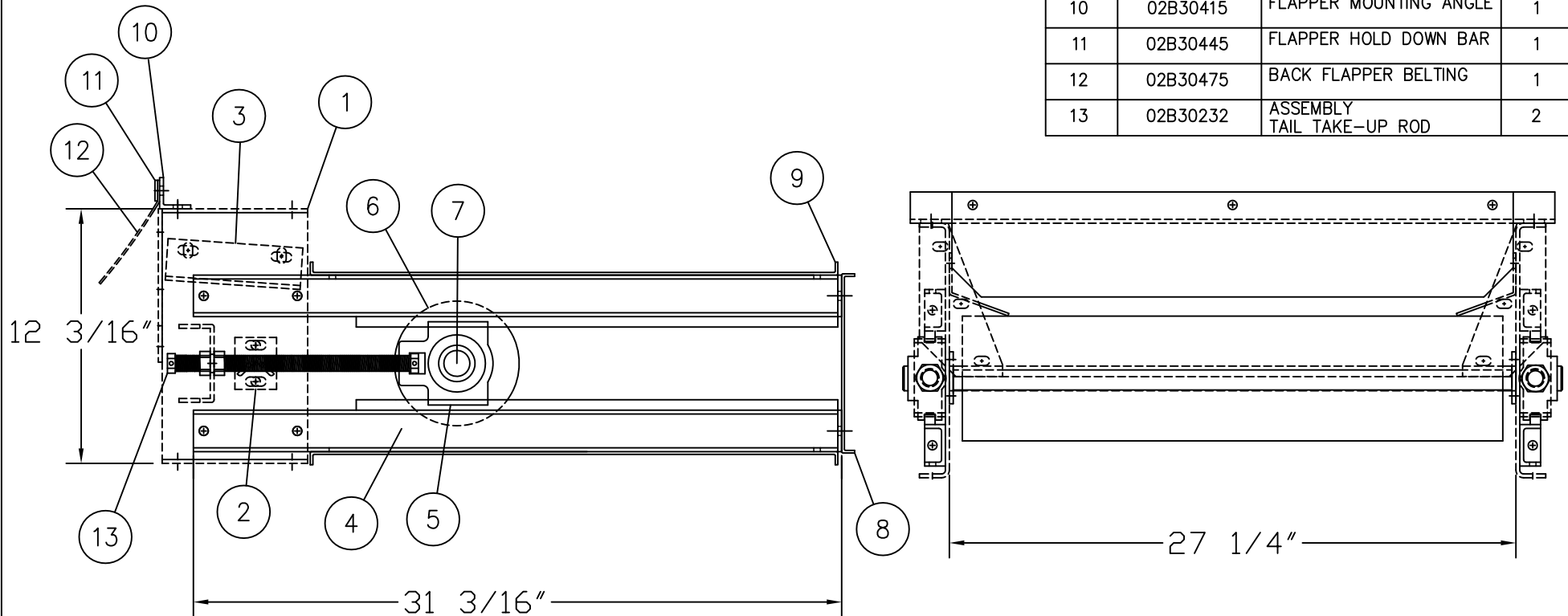
PART NO: 00B30231  
 CULLET CONVEYOR TAIL ASSEMBLY  
 6" DIAMETER CROWNED BARE PULLEY  
 24" BELT WIDTH  
 12" TAKE-UP

ITEM	PART NO.	DESCRIPTION	QTY.
1	01B30040	TERMINAL PLATE	2
2	01B30071	ANGLE CROSS TIE WELDMENT	1
3	02B30325	TRANSITION GUIDE TAIL TERMINAL	2
4	01B30202	WELDMENT 12" TAKE-UP CHANNEL	4
5	05A99075	TAKE-UP BEARING	2
6	05B30415	CROWNED BARE PULLEY	1
7	02A30960	TAIL SHAFT	1
8	02B30715	TAKE UP END PLATE	1
9	02B30775	24" B.W. X 12" TAKE-UP TAKE UP PULLEY GUARD	2
10	02B30415	FLAPPER MOUNTING ANGLE	1
11	02B30445	FLAPPER HOLD DOWN BAR	1
12	02B30475	BACK FLAPPER BELTING	1
13	02B30231	ASSEMBLY TAIL TAKE-UP ROD	2



PART NO: 00B30240  
 CULLET CONVEYOR TAIL ASSEMBLY  
 6" DIAMETER CROWNED WINGED PULLEY  
 24" BELT WIDTH  
 18" TAKE-UP

ITEM	PART NO.	DESCRIPTION	QTY.
1	01B30040	TERMINAL PLATE	2
2	01B30071	ANGLE CROSS TIE WELDMENT	1
3	02B30325	TRANSITION GUIDE TAIL TERMINAL	2
4	01B30204	WELDMENT 18" TAKE-UP CHANNEL	4
5	05A99075	TAKE-UP BEARING	2
6	05B30315	CROWNED WINGED PULLEY	1
7	02A30960	TAIL SHAFT	1
8	02B30715	TAKE UP END PLATE	1
9	02B30805	24" B.W. X 18" TAKE-UP TAKE UP PULLEY GUARD	2
10	02B30415	FLAPPER MOUNTING ANGLE	1
11	02B30445	FLAPPER HOLD DOWN BAR	1
12	02B30475	BACK FLAPPER BELTING	1
13	02B30232	ASSEMBLY TAIL TAKE-UP ROD	2



PART NO: 00B30241  
 CULLET CONVEYOR TAIL ASSEMBLY  
 6" DIAMETER CROWNED BARE PULLEY  
 24" BELT WIDTH  
 18" TAKE-UP

ITEM	PART NO.	DESCRIPTION	QTY.
1	01B30040	TERMINAL PLATE	2
2	01B30071	ANGLE CROSS TIE WELDMENT	1
3	02B30325	TRANSITION GUIDE TAIL TERMINAL	2
4	01B30204	WELDMENT 18" TAKE-UP CHANNEL	4
5	05A99075	TAKE-UP BEARING	2
6	05B30415	CROWNED BARE PULLEY	1
7	02A30960	TAIL SHAFT	1
8	02B30715	TAKE UP END PLATE	1
9	02B30805	24" B.W. X 18" TAKE-UP TAKE UP PULLEY GUARD	2
10	02B30415	FLAPPER MOUNTING ANGLE	1
11	02B30445	FLAPPER HOLD DOWN BAR	1
12	02B30475	BACK FLAPPER BELTING	1
13	02B30232	ASSEMBLY TAIL TAKE-UP ROD	2

