



CULLET CONVEYOR SPARE PRICE LIST

SPARE PARTS

NCI PART #	J&S PART #	DESCRIPTION	UNIT
00B30610		12" BELT WIDTH 10" -16" BELT HEIGHT SUPPORT ASSEMBLY INCLUDES RETURN ROLLER, KEEPER PLATES, CROSS BRACE AND FOOT PADS	EACH
00B30616		18" BELT WIDTH 10" -16" BELT HEIGHT SUPPORT ASSEMBLY INCLUDES RETURN ROLLER, KEEPER PLATES, CROSS BRACE AND FOOT PADS	EACH
00B30622		24" BELT WIDTH 10" -16" BELT HEIGHT SUPPORT ASSEMBLY INCLUDES RETURN ROLLER, KEEPER PLATES, CROSS BRACE AND FOOT PADS	EACH
01B30001		ROLLER BED STYLE SIDE FRAME 120" LONG	EACH
01B30002		SLIDER BED STYLE SIDE FRAME 120" LONG	EACH
02B30133		12" SLIDER BED STYLE BED SECTION 120" LONG	EACH
02B30139		18" SLIDER BED STYLE BED SECTION 120" LONG	EACH
01B30600		10"-16" BELT HEIGHT SUPPORT	EACH
02B30300		RETURN ROLL MOUNTING BRACKET	EACH
02B30305		RETURN ROLL KEEPER PLATE	EACH
02B30310		SNUB ROLL KEEPER PLATE	EACH
02B30660		CHANNEL LEG SUPPORT MTG. BRKT.	EACH
02B30673		12" B.W. 10"-16" SUPPORT BRACE	EACH
02B30679		18" B.W. 10"-16" SUPPORT BRACE	EACH
02B30685		24" B.W. 10"-16" SUPPORT BRACE	EACH
05A99065		BEARING FOR 6" DIA HEAD PULLEY	EACH
05A99067		BEARING FOR 8" DIA HEAD PULLEY	EACH
05A99075		TAKE UP BEARING	EACH
02A30910		12" B.W. (6" DIA PULLEY) HEAD SHAFT	EACH
02A30915		12" B.W. (8" DIA PULLEY) HEAD SHAFT	EACH
02A30920		18" B.W.(6" DIA PULLEY) HEAD SHAFT	EACH
02A30925		18" B.W.(8" DIA PULLEY) HEAD SHAFT	EACH
02A30950		12" B.W. TAIL SHAFT	EACH
02A30955		18" B.W. TAIL SHAFT	EACH

NORTHEAST CONVEYORS, INC.
7620 EVERGREEN STREET, LIMA, NY 14485
PH:585.624.7850 FX:585.624.8015
TOLL FREE: 1.888.632.6683



CULLET CONVEYOR SPARE PRICE LIST

CARRY ROLLERS

NCI PART #	J&S PART #	DESCRIPTION	UNIT
05B30800	60-14-2010	9" BELT WIDTH (6.12")	EACH
05B30803	60-14-2015	12" BELT WIDTH (9.12")	EACH
05B30806	60-14-2018	15" BELT WIDTH (12.12")	EACH
05B30809	60-14-2020	18" BELT WIDTH (15.12")	EACH
05B30815	60-14-2025	24" BELT WIDTH (21.12")	EACH
05B30821	60-14-2030	36" BELT WIDTH (27.12")	EACH

RETURN ROLLERS

NCI PART #	J&S PART #	DESCRIPTION	UNIT
05B30830	60-14-2210	9" BELT WIDTH (10.62")	EACH
05B30833	60-14-2215	12" BELT WIDTH (13.62")	EACH
05B30836	60-14-2218	15" BELT WIDTH (16.62")	EACH
05B30839	60-14-2220	18" BELT WIDTH (19.62")	EACH
05B30845	60-14-2225	24" BELT WIDTH (25.62")	EACH
05B30851	60-14-2230	30" BELT WIDTH (31.62")	EACH

SNUB ROLLERS

NCI PART #	J&S PART #	DESCRIPTION	UNIT
05B30860	60-14-2060	9" BELT WIDTH (11.75")	EACH
05B30863	60-14-2065	12" BELT WIDTH (14.75")	EACH
05B30866	60-14-2068	15" BELT WIDTH (17.75")	EACH
05B30869	60-14-2070	18" BELT WIDTH (20.75")	EACH
05B30875	60-14-2080	24" BELT WIDTH (26.75")	EACH
05B30881	60-14-2090	30" BELT WIDTH (32.75")	EACH

NOTE: ALL ROLLERS HAVE SPRING LOADED HEX SHAFTS AND CAN BE USED FOR BOTH FOR NORTHEAST CULLET CONVEYORS AND J&S SR CONVEYORS.

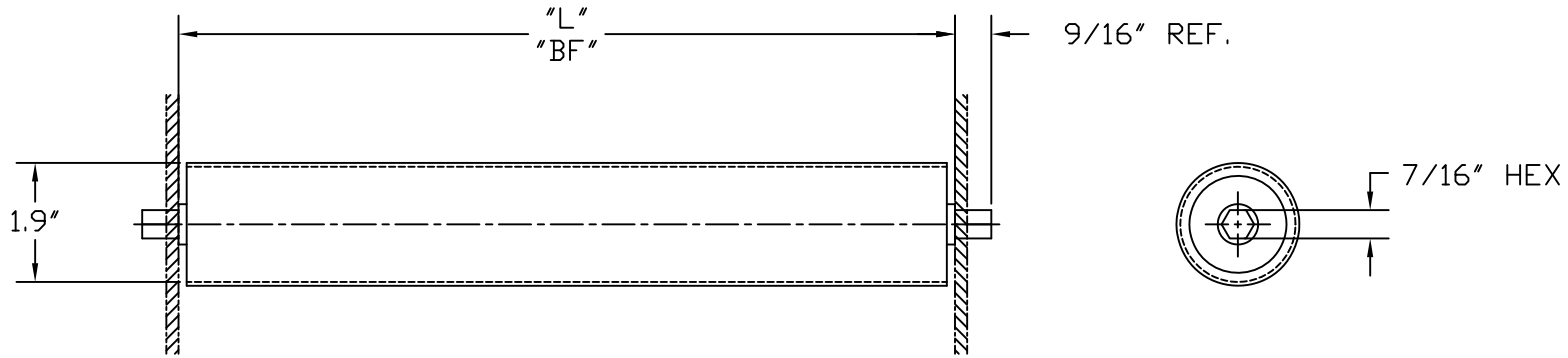
******CUSTOM ROLLERS AVAILABLE ******

TO OBTAIN CUSTOM ROLLER QUOTE PLEASE FILL OUT ROLLER IDENTIFICATION PAGE CHART.

NORTHEAST CONVEYORS, INC.
7620 EVERGREEN STREET, LIMA, NY 14485
PH:585.624.7850 FX:585.624.8015
TOLL FREE: 1.888.632.6683

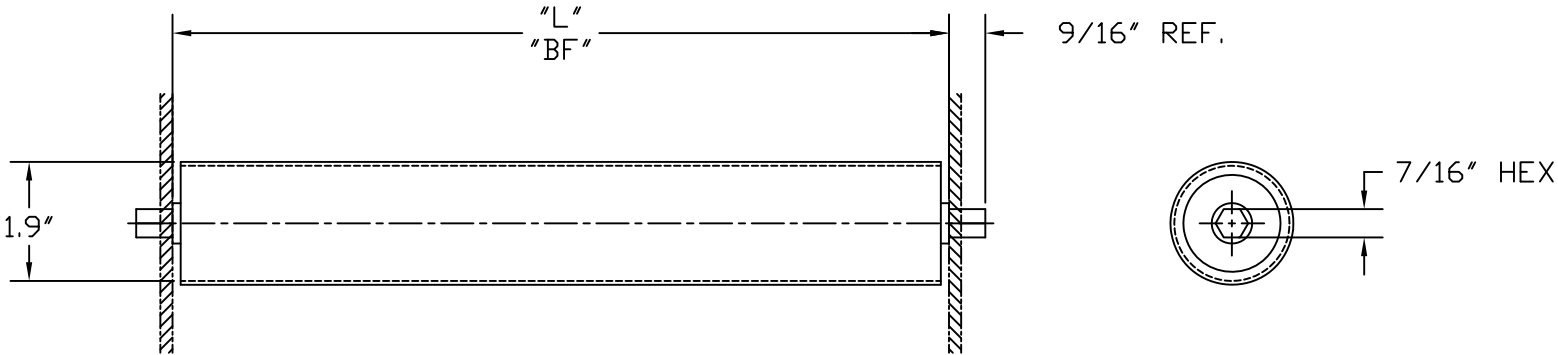
STANDARD CARRY ROLLER
SLIDER/ROLLER CONVEYOR

BELT WIDTH	"L" "BF"	ROLLER PART NO.
9"	6 1/4	05B30800
12"	9 1/4	05B30803
15"	12 1/4	05B30806
18"	15 1/4	05B30809
24"	21 1/4	05B30815
30"	27 1/4	05B30821



STANDARD RETURN ROLLER
SLIDER/ROLLER CONVEYOR

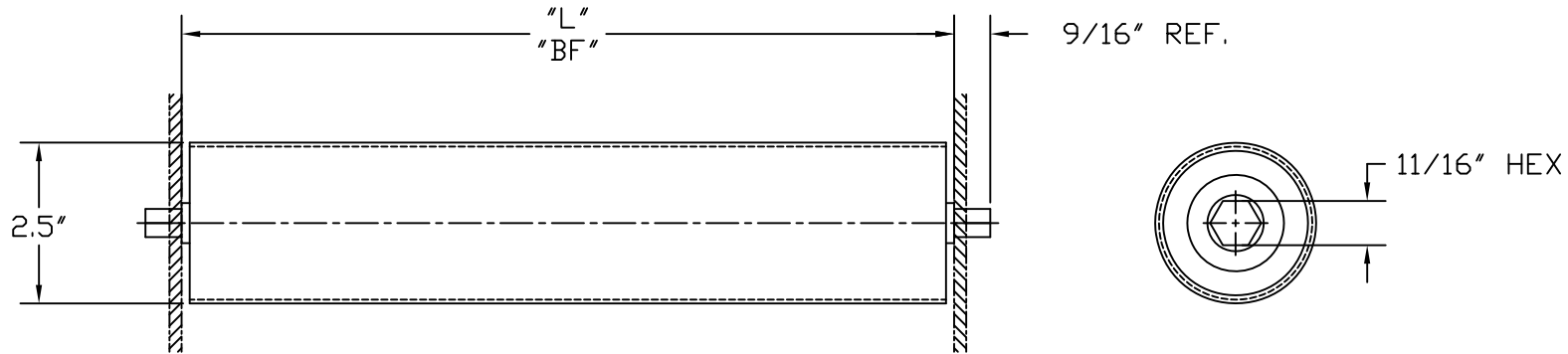
BELT WIDTH	"L" "BF"	ROLLER PART NO.
9"	10 3/4	05B30830
12"	13 3/4	05B30833
15"	16 3/4	05B30836
18"	19 3/4	05B30839
24"	25 3/4	05B30845
30"	31 3/4	05B30851



7620 EVERGREEN ST.
LIMA, NY 14485
(v) 585.624.7850 (f) 585.624.8015
1.888.NECONVEY (1.888.632.6683)
(e) conveyor@neind.com

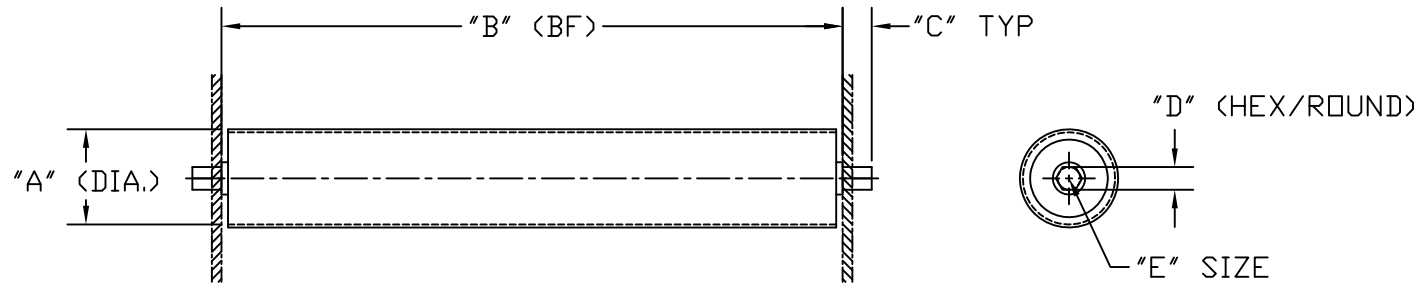
STANDARD SNUB ROLLER
SLIDER/ROLLER CONVEYOR

BELT WIDTH	"L" "BF"	ROLLER PART NO.
9"	12 1/4	05B30860
12"	15 1/4	05B30863
15"	18 1/4	05B30866
18"	21 1/4	05B30869
24"	27 1/4	05B30875
30"	33 1/4	05B30881



7620 EVERGREEN ST.
LIMA, NY 14485
(v) 585.624.7850 (f) 585.624.8015
1.888.NECONVEY (1.888.632.6683)
(e) conveyor@neind.com

ROLLER IDENTIFICATION CHART



A	B	C	D	E	DESCRIPTION/NOTES



CULLET CONVEYOR SPARE PRICE LIST

PULLEYS

NCI PART #	J&S PART #	DESCRIPTION	UNIT
05B30203		12" BELT WIDTH - HEAD PULLEY 6" DIA. RUBBER LAGGED	EACH
05B30209		18" BELT WIDTH - HEAD PULLEY 6" DIA. RUBBER LAGGED	EACH
05B30215		24" BELT WIDTH - HEAD PULLEY 6" DIA. RUBBER LAGGED	EACH
05B30253		12" BELT WIDTH - HEAD PULLEY 8" DIA. RUBBER LAGGED	EACH
05B30259		18" BELT WIDTH - HEAD PULLEY 8" DIA. RUBBER LAGGED	EACH
05B30265		24" BELT WIDTH - HEAD PULLEY 8" DIA. RUBBER LAGGED	EACH
05B30303		12" BELT WIDTH - TAIL PULLEY 6" DIA. WINGED	EACH
05B30309		18" BELT WIDTH - TAIL PULLEY 6" DIA. WINGED	EACH
05B30315		24" BELT WIDTH - TAIL PULLEY 6" DIA. WINGED	EACH

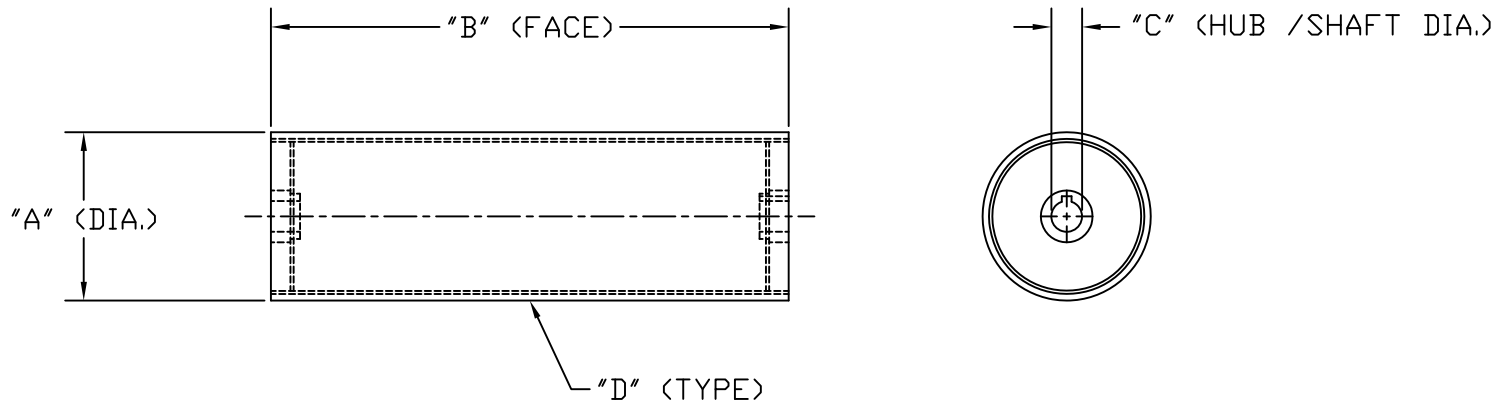
NOTE: ALL PULLEYS CAN BE USED FOR BOTH NORTHEAST CULLET CONVEYORS
AND J&S SR CONVEYORS

******CUSTOM PULLEYS AVAILABLE ******

TO OBTAIN CUSTOM PULLEY QUOTE PLEASE FILL OUT PULLEY IDENTIFICATION PAGE CHART.

NORTHEAST CONVEYORS, INC.
7620 EVERGREEN STREET, LIMA, NY 14485
PH:585.624.7850 FX:585.624.8015
TOLL FREE: 1.888.632.6683

PULLEY IDENTIFICATION CHART



"A" (DIA)	"B" (FACE)	"C" (HUB)	"D" (TYPE)- SPECIFY: BARE, RUBBER LAGGED OR WINGED